

Durham Unified School District COVID-19 Student Exposure Protocols

1

Scenario

Quarantine recommendations for **unvaccinated** students for exposures **when both parties** were wearing a mask, as required in K-12 indoor settings.

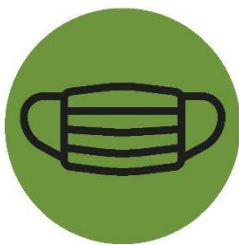
Action

When both parties were wearing a mask in the indoor classroom setting, unvaccinated students who are close contacts** (**more than 15 minutes over a 24-hour period within 0-6 feet indoors**) may undergo a modified 10-day quarantine as follows. They may continue to attend school for in-person instruction if they meet the criteria.

Criteria

1. Are asymptomatic;
2. Continue to appropriately mask, as required;
3. Undergo at least twice weekly testing*** during the 10-day quarantine; and
4. Continue to quarantine for all extracurricular activities at school, including sports, and activities within the community setting.

Unvaccinated Students - Everyone Masked

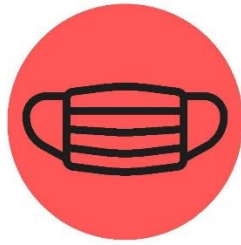


Close Contact Asymptomatic

- Continues to come to school
- No extracurricular activities, quarantine in community
- Testing*** 2x weekly for 10 days; can return to all extra curricular and community activities after day 7

OR

- **Quarantine** for 7 days, if no symptoms and diagnostically*** tested after day 5 with negative test can return to school and all extracurricular activities after Day 7 (quarantine shortened by 3 days)



Positive Case

Full Isolation

- Must be excluded from work until:
 1. At least 24 hours have passed since a fever of 100.4 degrees Fahrenheit or higher has resolved without the use of fever-reducing medications; and
 2. COVID-19 symptoms have improved; and
 3. At least 10 days have passed since COVID-19 symptoms first appeared.

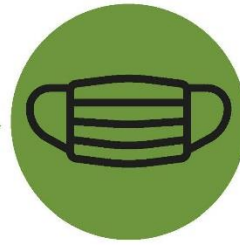


Close Contact Asymptomatic

- Continues to come to school
- No extracurricular activities, quarantine in community
- Testing*** 2x weekly for 10 days; can return to all extra curricular and community activities after day 7

OR

- **Quarantine** for 7 days, if no symptoms and diagnostically*** tested after day 5 with negative test can return to school and all extracurricular activities after Day 7 (quarantine shortened by 3 days)



Close Contact Asymptomatic

- Continues to come to school
- No extracurricular activities, quarantine in community
- Testing*** 2x weekly for 10 days; can return to all extra curricular and community activities after day 7

OR

- **Quarantine** for 7 days, if no symptoms and diagnostically*** tested after day 5 with negative test can return to school and all extracurricular activities after Day 7 (quarantine shortened by 3 days)

Durham Unified School District COVID-19 Student Exposure Protocols

2

Scenario

Quarantine Recommendations for **unvaccinated close contacts** who were not wearing a mask or for whom the infected individual was not wearing a mask during the indoor exposure; or unvaccinated students as described in #1 above.

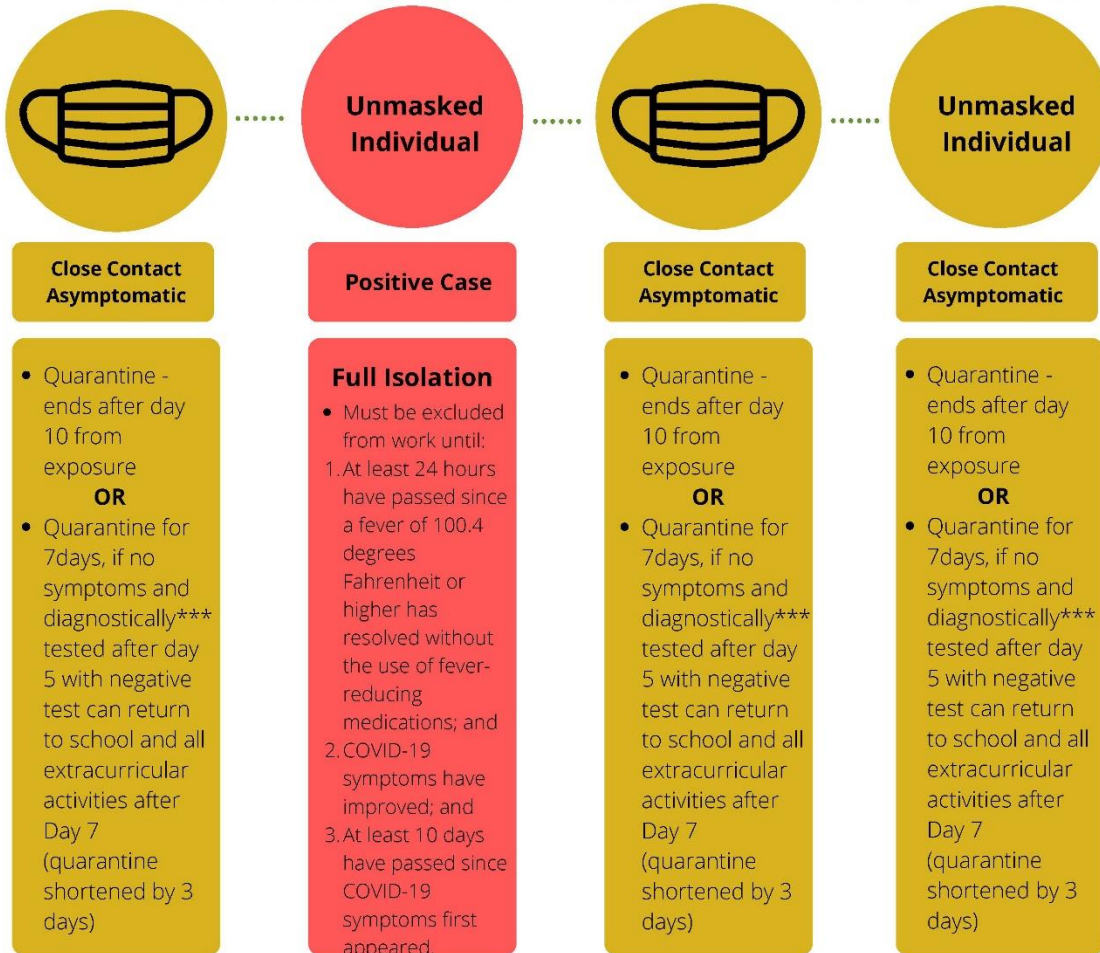
Action

For these contacts, those who remain asymptomatic, meaning they have NOT had any symptoms, may discontinue self-quarantine under the following criteria:

Criteria

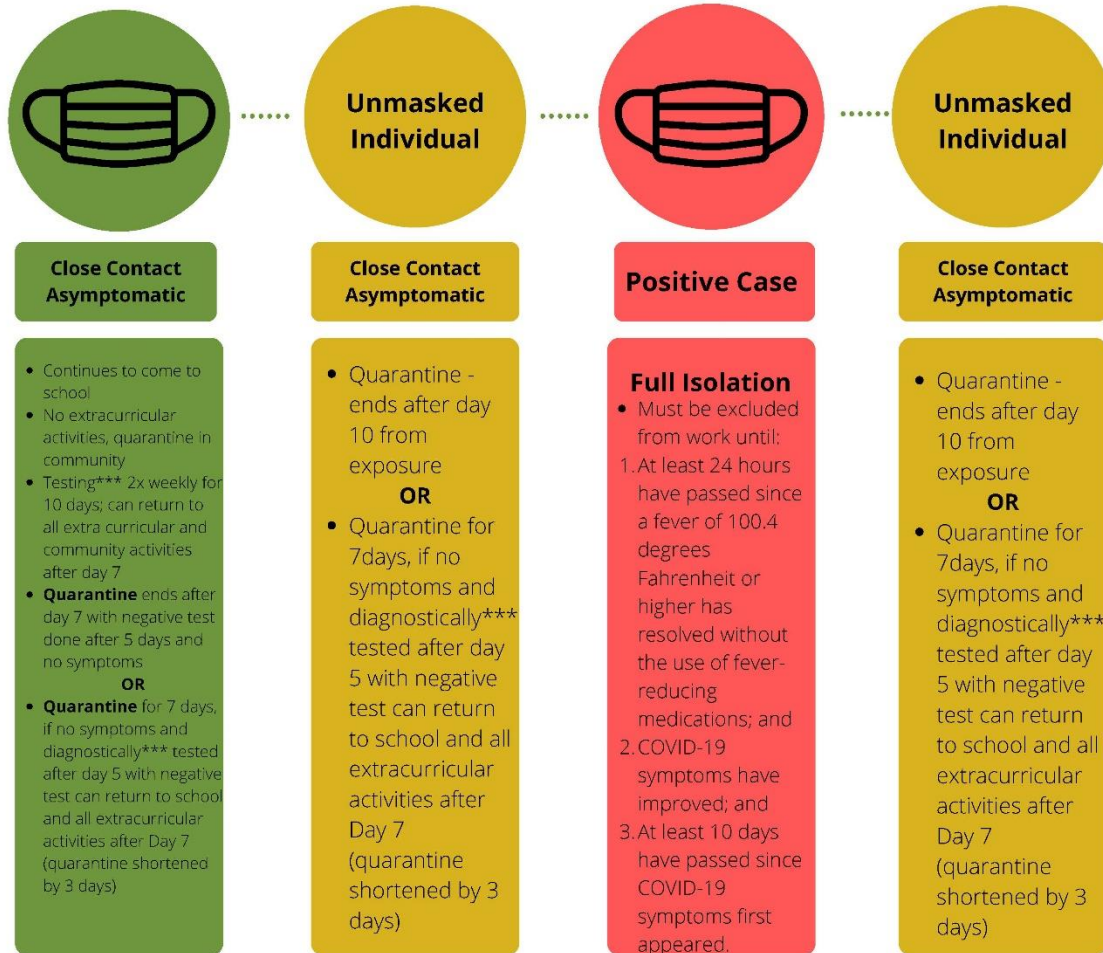
1. Quarantine can end after Day 10 from the date of last exposure without testing; OR
2. Quarantine can end after Day 7 if a diagnostic specimen*** is collected after Day 5 from the date of last exposure and tests negative.

Unvaccinated Students - Infected Individual Unmasked



Durham Unified School District COVID-19 Student Exposure Protocols

Unvaccinated Students - Infected Individual Masked



*Adapted from the [CDC K-12 guidance](#) and [CDC definition of a close contact](#). If exposure occurs outside of the school setting this guidance does not apply, and the Community Health Quarantine guidance does. This guidance does not apply to adults. Educators and staff must adhere to the guidelines provided by Cal/OSHA.

**[Contact tracing](#) for individuals who were within 0-6 feet for more than 15 minutes over a 24-hour period indoors. These individuals that the positive case has been around during the two-day period prior to the start of symptoms (or two days before the positive COVID-19 specimen collection date) are close contacts and should follow the close contact protocol.

***Diagnostic tests are PCR or Antigen; home tests are not diagnostic tests.+